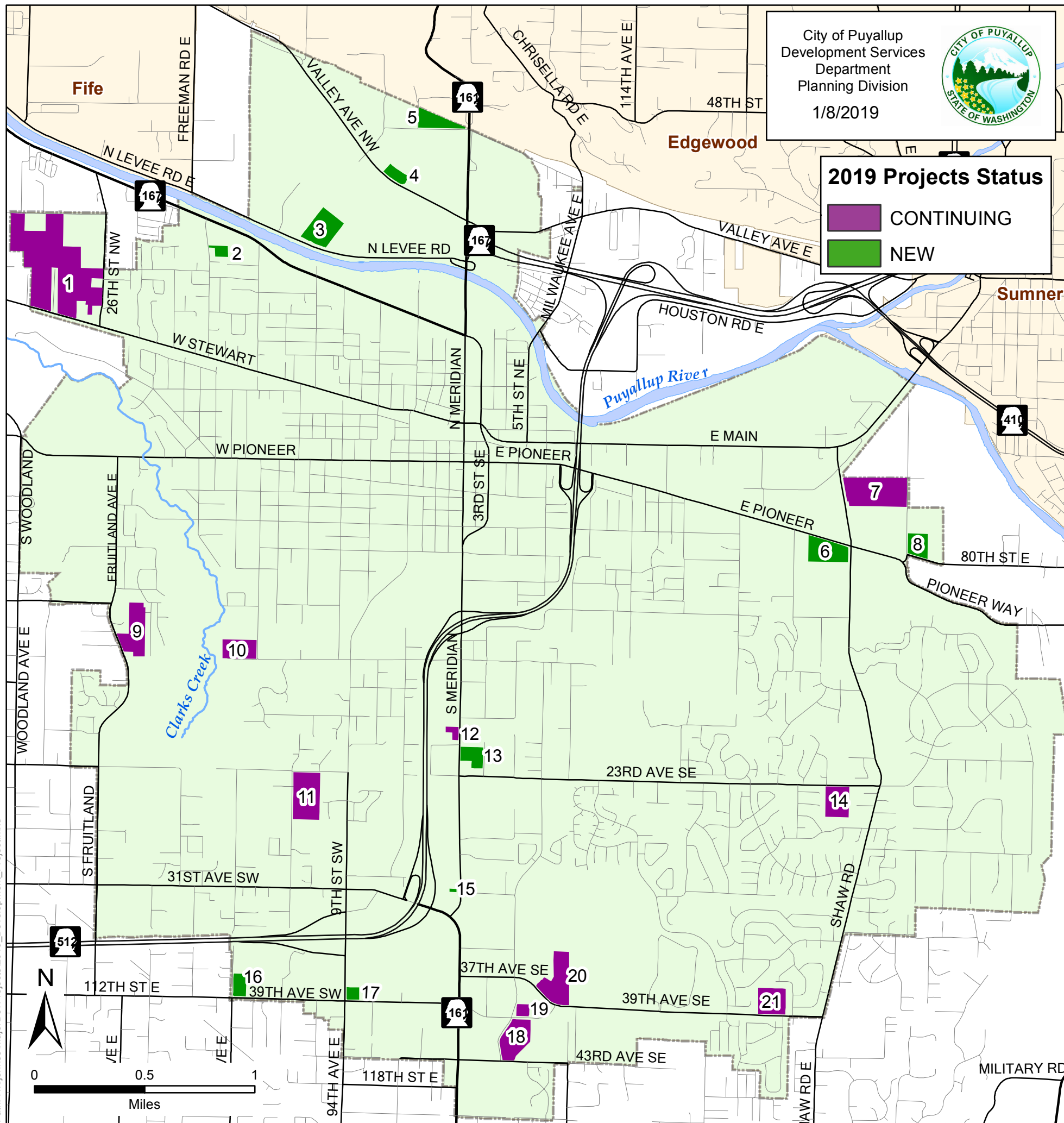


# City of Puyallup 2019 Major Development Projects



#	Name	Description	Status
1	Stewart Crossing	Continued construction of major single-family project, including proposed phase 8	Continuing
2	Riverdance	20 new townhomes & associated site improvements	New
3	Olympic Eagle Distributing Addition	13,000 square foot expansion to an existing 140,000 square foot warehouse	New
4	Valley Ave Warehouse	44,090 square foot industrial building on 3.17 acres	New
5	Todd Road PSE Warehouse	8,000 square foot office space, 10,000 square foot shop space & 20,000 square foot warehouse	New
6	Pioneer Crossing Retail Center	New 83,000 square foot retail center, on 6.2 acres, including a new Safeway	New
7	Viking Industrial	445,000 square foot industrial building on a 23 acre site	Continuing
8	Step by Step	Site improvements for Step-by-Step (non-profit) on 6.23 acres	New
9	Fruitland Ridge	33 lot single-family residential subdivision	Continuing
10	Puyallup Hatchery Remodel	Major upgrade to fish-rearing areas and other hatchery facilities	Continuing
11	Malone Plat	Construction of 34 single-family residential lots on a 17 acre site	Continuing
12	Huntington Apartments	A 38 unit multi-family residential complex	Continuing
13	Cascadia Memory Care Facility	47,000 square foot, 66 bed memory care facility on 3.1 acres	New
14	Sully's Glen	28 single-family residential plat on 9.4 acres	Continuing
15	30th & Meridian Medical Office Building #4	New 24,484 square foot building, 4th professional office building on site	New
16	Village Co-op Senior Apartments	New 3-story, 57-unit village cooperative (senior adult multifamily)	New
17	La Quinta Hotel	4 story, 101 room hotel proposed on 1.6 acres	New
18	Affinity Senior Housing/RJ Memory Care	Two separate projects on adjacent sites: 168 unit independent living senior units/ 72 bed memory care facility	Continuing
19	CPFR new Station 72	18,000 square foot fire station building	Continuing
20	Wesley Homes	Senior housing complex consisting of a 75,000 square foot assisted living facility and 70 separate "brownstone" units	Continuing
21	Sunrise Elementary School Reconstruction	81,000 square foot school building on existing Sunrise Elementary site	Continuing

**NOTE: THIS IS ONLY A PARTIAL LIST OF DEVELOPMENT PROJECTS EXPECTED THROUGHOUT THE CITY IN 2019**

The map features are approximate and are intended only to provide an indication of said feature. Additional areas that have not been mapped may be present. This is not a survey. Orthophotos and other data may not align. The County assumes no liability for variations ascertained by actual survey. ALL DATA IS EXPRESSLY PROVIDED 'AS IS' AND 'WITH ALL FAULTS'. The County makes no warranty of fitness for a particular purpose.