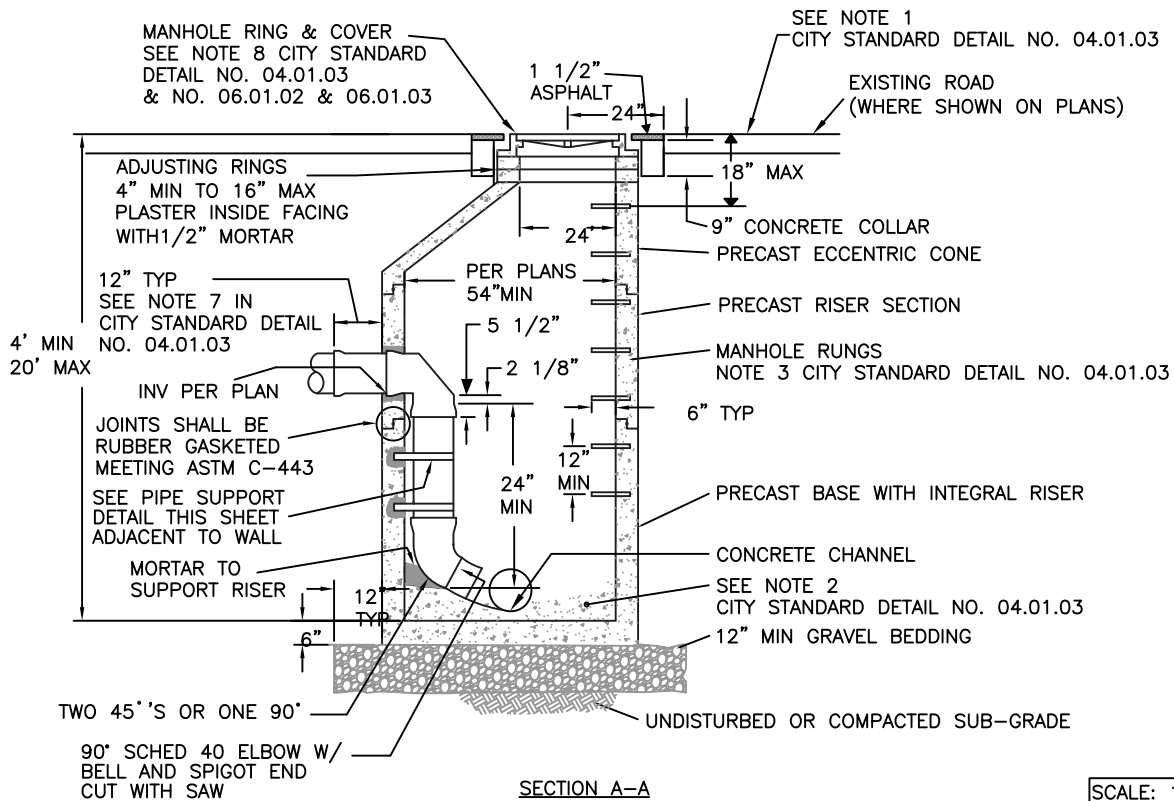


* WHEN RETRO-FITTING A 48" MANHOLE DROP MUST BE INSTALLED ON LADDER SIDE OF MANHOLE.*



CITY OF PUYALLUP

DEVELOPMENT ENGINEERING and PUBLIC WORKS DEPARTMENTS

INSIDE DROP SANITARY SEWER MANHOLE

DRAWN BY JIM ERWIN-SVOBODA

CHECKED BY LINDA LIAN

APPROVED BY COLLEEN HARRIS

REVISED BY XXXX

CITY STANDARD

FILE NAME F:\DWG\COMMON\STDS\CITY\2009\04_SS\04.01\04.01.02

DATE APPROVED 07/01/2009

DATE REVISED XX/XX/XX

SCALE VARIES

04.01.02