

ENDANGERED POLLINATORS

U.S. Fish & Wildlife Service (2017)

VIEW LIST: <https://www.fws.gov/pollinators/Programs/Endangered.html>

Mammals	<p>Little Mariana fruit bat (<i>Pteropus tokudae</i>) Mariana Fruit Bat (<i>Pteropus mariannus mariannus</i>) Mexican Long-nosed Bat (<i>Leptonycteris nivalis</i>)</p>
Birds	<p>Akeke'e or Kaua'i 'Akepa or (<i>Loxops caeruleirostris</i>) 'Akiapola'au (<i>Hemignathus wilsoni</i>) 'Akikiki (<i>Oreomystis bairdi</i>) 'Akohekohe or Crested Honeycreeper (<i>Palmeria dolei</i>) 'Alala or Hawai'ian Crow (<i>Corvus hawaiiensis</i>) Bridled White-eye (<i>Zosterops conspicillatus conspicillatus</i>) Hawai'i 'Akepa (<i>Loxops coccineus</i>) Hawai'i Creeper (<i>Loxops mana</i>) 'I'iwi (<i>Drepanis coccinea</i>) Kaua'i 'Akialoa (<i>Akialoa stejnegeri</i>) Kaua'i Nukupu'u (<i>Hemignathus hanapepe</i>) Kaua'i 'O'o (<i>Moho braccatus</i>) Ma'oma'o or Mao (<i>Gymnomyza samoensis</i>) Maui 'Akepa (<i>Loxops ochraceus</i>) Maui Nukupu'u (<i>Hemignathus affinis</i>) Maui Parrotbill (<i>Pseudonestor xanthophrys</i>) Moloka'i Creeper or Kakawahie (<i>Paroreomyza flammea</i>) O'ahu 'Alauahio or O'ahu Creeper (<i>Paroreomyza maculata</i>) 'O'u (<i>Psittirostra psittacea</i>) Palila (<i>Loxioides bailleui</i>) Po'ouli (<i>Melamprosops phaeosoma</i>) Rota Bridled White-eye (<i>Zosterops rotensis</i>)</p>
Bees	<p>Anthriscinan yellow-faced bee (<i>Hylaeus anthracinus</i>) Assimulans yellow-faced bee (<i>Hylaeus assimulans</i>) Easy yellow-faced bee (<i>Hylaeus facilis</i>) Hawaiian yellow-faced bee (<i>Hylaeus kuakea</i>) Hawaiian yellow-faced bee (<i>Hylaeus longiceps</i>) Hawaiian yellow-faced bee (<i>Hylaeus mana</i>) Hilaris yellow-faced bee (<i>Hylaeus hiliaris</i>) Rusty patched bumble bee (<i>Bombus affinis</i>)</p>
Butterflies, Skippers, and Moths	<p>Bartram's hairstreak butterfly (<i>Strymon acis bartrami</i>) Bay Checkerspot (<i>Euphydryas editha bayensis</i>) Behren's Silverspot (<i>Speyeria zerene behrensii</i>) Blackburn's Sphinx Moth (<i>Manduca blackburni</i>) Callippe Silverspot (<i>Speyeria callippe callippe</i>) Carson Wandering Skipper (<i>Pseudocopaeodes eunus obscurus</i>)</p>

ENDANGERED POLLINATORS Cont.

	<p>Cassius Blue (<i>Leptotes cassius theonus</i>) Ceraunus Blue (<i>Hemiargus ceraunus antibubastus</i>) Dakota Skipper (<i>Hesperia dacotae</i>) El Segundo Blue (<i>Euphilotes battoides allyni</i>) Fender's Blue (<i>Icaricia icarioides fenderi</i>) Florida leafwing (<i>Anaea troglodyta floridalis</i>) Karner Blue (<i>Lycaeides melissa samuelis</i>) Kern Primrose Sphinx Moth (<i>Euproserpinus euterpe</i>) Laguna Mountains Skipper (<i>Pyrgus ruralis lagunae</i>) Lange's Metalmark (<i>Apodemia mormo lange</i>) Lotis Blue (<i>Lycaeides argyrognomon lotis</i>) Mariana eight-spot butterfly (<i>Hypolimnas octocula mariannensis</i>) Mariana wandering butterfly (<i>Vagrans egistina</i>) Miami Blue (<i>Cyclargus thomasi bethunebakeri</i>) Misson Blue (<i>Icaricia icarioides missionensis</i>) Mitchell's Satyr (<i>Neonympha mitchellii mitchellii</i>) Mount Charleston Blue (<i>Plebejus shasta charlestonensis</i>) Myrtle's Silverspot (<i>Speyeria zerene myrtleae</i>) Nickerbean Blue (<i>Cyclargus ammon</i>) Oregon Silverspot (<i>Speyeria zerene hippolyta</i>) Palos Verde Blue (<i>Glaucopsyche lygdamus palosverdesensis</i>) Pawnee montane Skipper (<i>Hesperia leonardus montana</i>) Poweshiek skipperling (<i>Oarisma poweshiek</i>) Quino Checkerspot (<i>Euphydryas editha quino</i>) San Bruno Elfin (<i>Callophrys mossii bayensis</i>) Schaus Swallowtail (<i>Heraclides aristodemus ponceanus</i>) Smith's Blue (<i>Euphilotes enoptes smithi</i>) St. Francis' Satyr (<i>Neonympha mitchellii francisci</i>) Taylor's checkerspot (<i>Euphydryas editha taylori</i>) Uncompahgre Fritillary (<i>Boloria acrocne</i>)</p>
Other Insects	<p>Delhi Sands Flower-loving Fly (<i>Rhaphiomidas terminatus abdominalis</i>) Valley Elderberry Longhorn Beetle (<i>Desmocerus californicus dimorphus</i>)</p>

Let's do our part to help conserve our
pollinators!

ENDANGERED POLLINATORS

Currently on the endangered list: 22 birds, 8 bees, 36 butterfly & moths, 1 fly, 1 beetle, and 3 bat species.

(U.S. Fish & Wildlife Service, 2017 list)

To see a full list: <https://www.fws.gov>



MONARCH BUTTERFLY



BLUE-CAPPED HUMMINGBIRD



TAYLORS CHECKERSPOT BUTTERFLY

HOW YOU CAN HELP THESE POLLINATORS

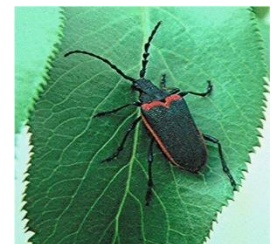
- Become a wildlife gardener! Keep grass longer; plant native shrubs, trees and flowers; and utilize log piles for nesting.
- Plant milkweed for butterflies. Plant Eucalyptus for bats.
- Give pollinators water- add decorative ponds and birdbaths.
- *Add feeding stations and birdhouses to your garden.*
- Avoid pesticides/insecticides, especially those containing Neonicotinoids.
- Buy local and organic, promoting safe local farming. Visit our Farmer's Market!
- *Spread the word!*



SHORT-CRESTED CROQUETTE



PAWNEE MONTANE SKIPPER MOTH



VALLEY ELDERBERRY LONGHORN BEETLE



MEXICAN LONG-NOSED BAT